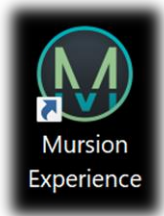


Mursion® Experience Guide

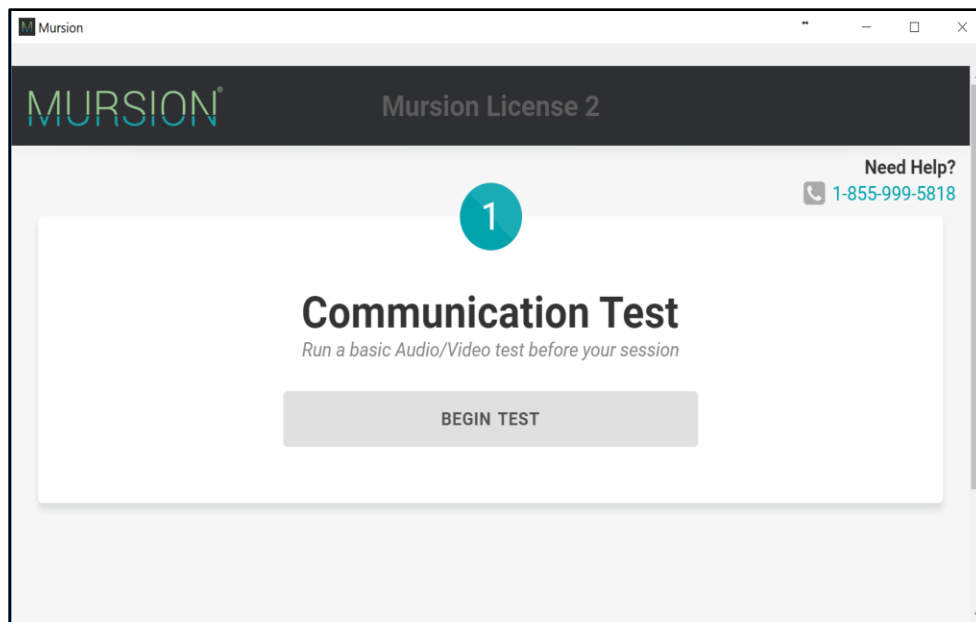
This documentation will walk you through the different screens you will encounter when launching for a Mursion® Simulation. Throughout this guide we will try to point out new features and added enhancements.



To begin, let's start by clicking on the Mursion® Experience Icon now located on your desktop as shown below.

Communication Test Screen

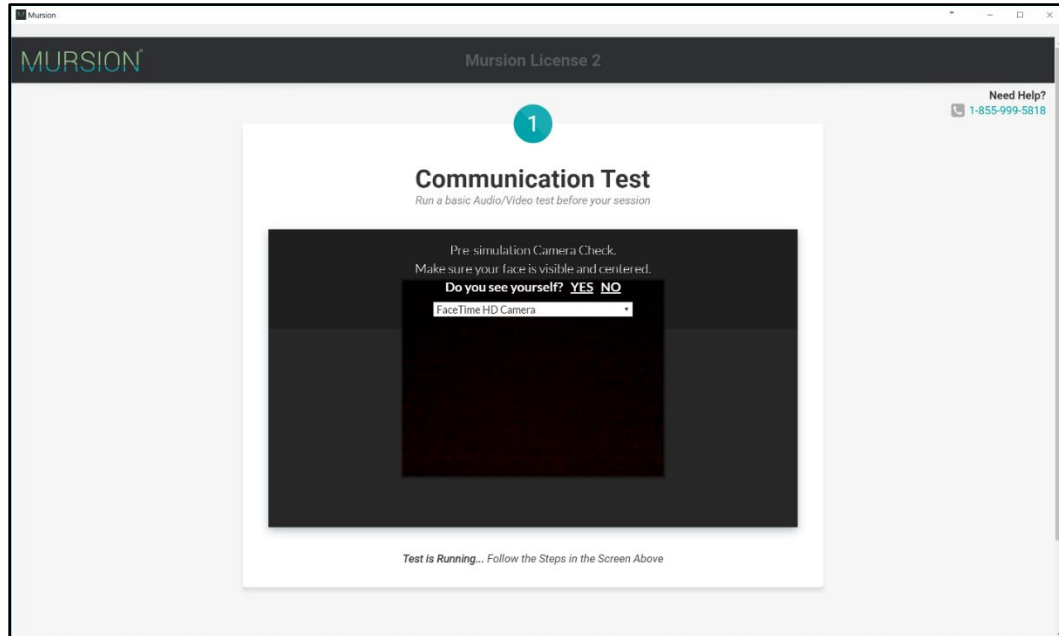
The first screen that initializes is the Communication test screen. We have added the communication test in the beginning of the launch to help rectify any issues before the simulation begins. The Technical support helpline is shown on the top right corner of every test screen for your convenience.



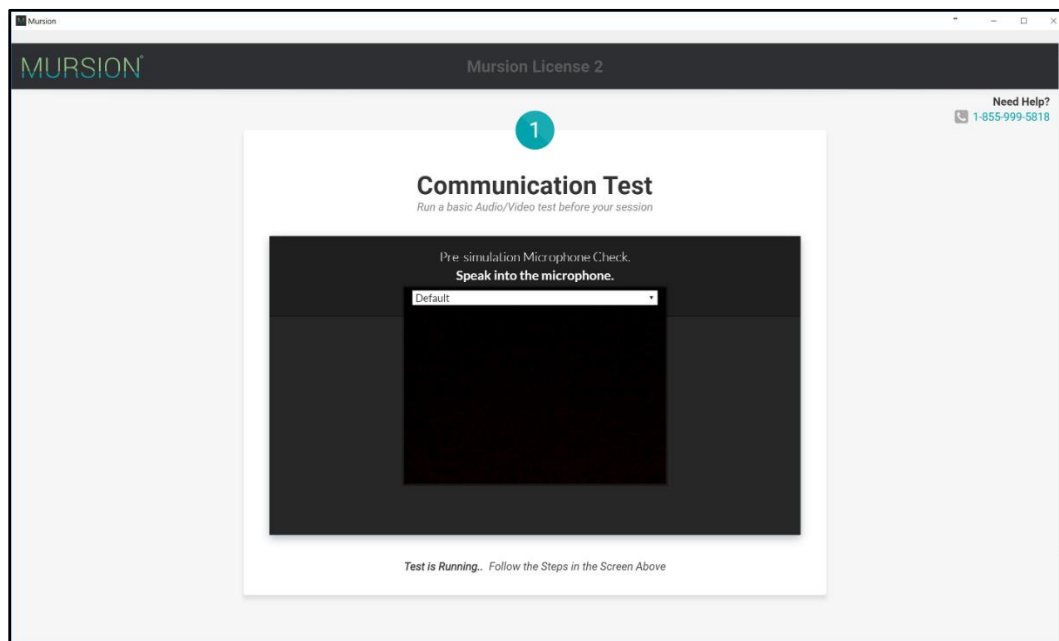
- Click “Begin Test” to get started.

Video and Audio Test Screen

The next two screens will test your Video and Audio connections. The Video Test Screen will ask you if you see yourself and you can pick a different camera, if needed, in the dropdown. Once you see yourself clearly click **YES** to continue.

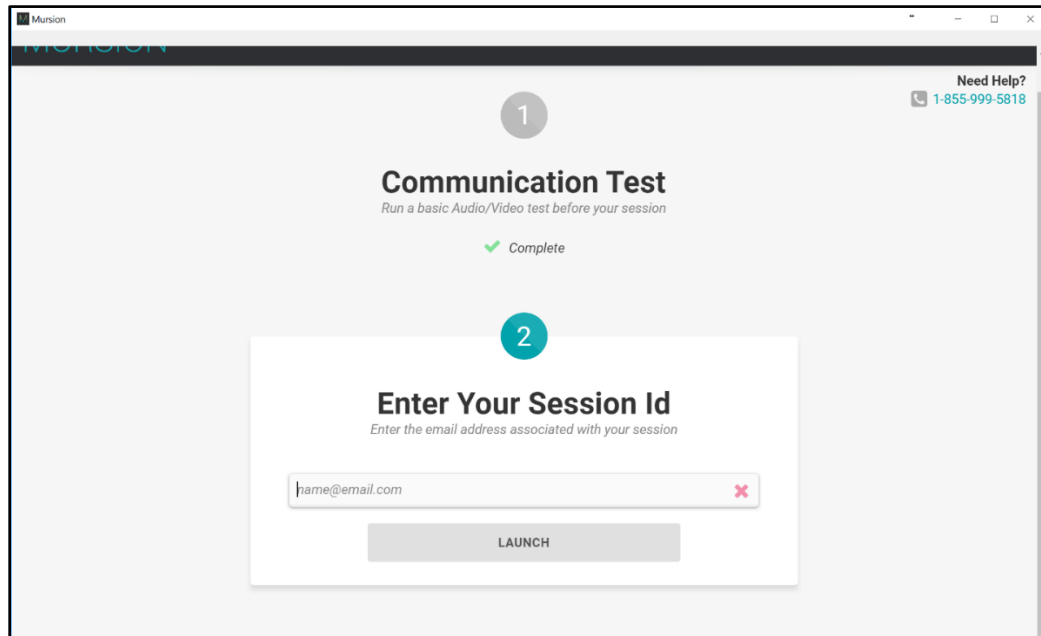


Next, let's verify that your microphone is working. The default selection will be "Default". This means that it will use the primary microphone set on your computer. To change, use the dropdown box to select the microphone you wish to use. Speak into the microphone to continue.

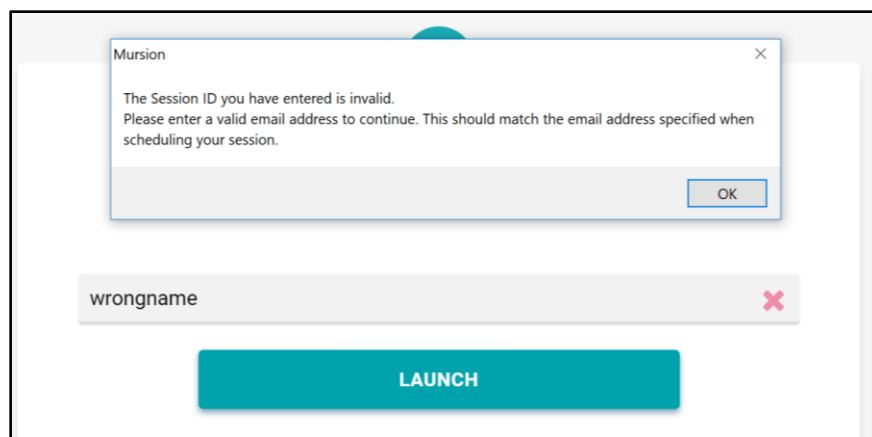


Session ID Screen

Finally, we get to the Session ID Screen. Make sure to add the correct Session ID into the field provided. The Session ID should be in an email format and you will receive an error message as shown below if the incorrect format is used.

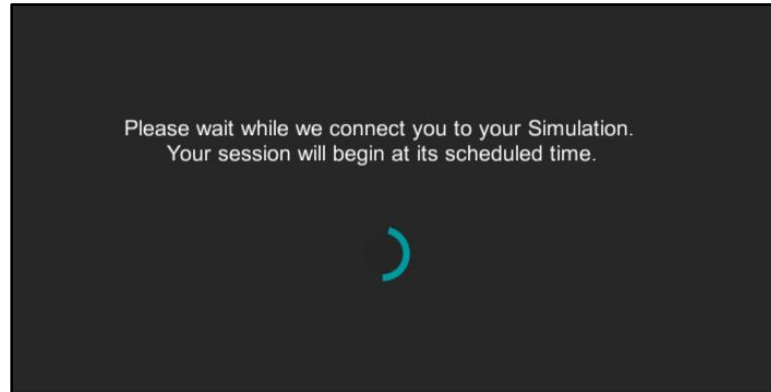


With the new session name validation, your session name will no longer be case sensitive and you will be alerted if the session name you entered does not match our required session name formatting.



Waiting area Screen

Once you get to this point, you have completed all the communication tests and are awaiting a simulation to begin. With the new Mursion® Experience, the corresponding environment to your scheduled session will automatically load.



Viewing your Avatars

To view the avatars in fullscreen mode, press the 'F' key on your keyboard to toggle between windowed and fullscreen mode. If the window appears on the wrong screen, simply drag it to the correct screen, using the 'F' key to toggle to your desired view mode.

Ending your session

Once you have completed your simulation, press the esc key. You will be prompted to confirm that you wish to exit. Alternatively, you may also use the close button at the corner of the window (you may need to toggle back into windowed mode with the 'F' key if the close button is not visible).

Once you leave the session, you will be able to get back to the session ID screen to launch another simulation if one is scheduled. Note: If the session ID is the same just verify the ID is typed in correctly and hit relaunch session to go forward.

